



North Canberra Futsal Club



STAGE 3.2 – RETURN TO PLAY
JUNIOR FUTSAL

OCTOBER 2020

Club Submission

This Stage 3.2 Return to Play plan is provided by North Canberra Futsal club.

This plan outlines our operational delivery of matches in the following leagues

- ▶ Junior Futsal

This plan will commence on November 13 2020

The club contact responsible for this plan is;

NCF Club Registrar

registrar@northcanberrafutsal.com.au

The Club acknowledges that this plan is in accordance with the Capital Football COVID-19 Stage 3.2 – Return to Play Guidelines, Futsal Venues and is aware of the hygiene and safety aspects of return to matches.



CAPITAL
FOOTBALL

Match Operations at Venues

Attendance

Participants (including players, team officials, referees, volunteers, spectators) are not to attend matches if they:

- ▶ Feel unwell
- ▶ Have any flu-like symptoms
- ▶ Have travelled internationally
- ▶ Have travelled from Victoria
- ▶ Have travelled to any of the reported case locations listed on the NSW Health [website](#)
- ▶ Been exposed to a person with COVID-19
- ▶ Been tested for COVID-19 and have not yet received the results
- ▶ Have a medical condition or are at an age that puts them in a high-risk category

An [attendance register](#) will be kept of all attendees with names, contact details and a wellness check and the register must be available for venue owners (Netball ACT, Radford College, Daramalan College). Venue owners must be notified immediately of any positive COVID-19 case.

Hygiene

- ▶ Hand sanitiser will be accessible upon entry and exit to all venues and must be used by all persons entering and exiting the building
- ▶ NCF will promote regular and thorough hand washing by club and team officials and participants
- ▶ No sharing personal equipment including drink bottles, towels, bibs, GK gloves, shirts, shin pads
- ▶ NCF will ensure spaces, surfaces and equipment at each venue are regularly cleaned
- ▶ Ensure bins are provided around the venue
- ▶ All attendees should cover mouth and nose with a tissue or your elbow (not your hands) when you cough or sneeze
- ▶ If using tissues, place them directly in the bins provided
- ▶ No spitting at any time



Match Operations at Venue

Physical Distancing

- Get in, play, get out. Venues will be cleared of participants prior to the next session/game. No new participants will be allowed entry until venue is cleared. No pass outs are allowed. Once participant leaves the venue they will not be allowed back in.
- Games are scheduled so there is a gap 20 minute gap between games allowing teams/officials to leave before next teams arrive
- A maximum of 200 people will be allowed at any venue (not court) provided social distancing (1.5m or 4m²) is maintained. At the netball centre, a maximum of 200 people are allowed on each side of the grandstand (courts 1&2, courts 3&4).
- Team officials, club officials and referees on benches should maintain 1.5 metres distancing
- Three spectators per team will be permitted at this stage to comply with physical distancing protocols. Most NCF courts have limited usable space off court and outside team benches so spectator numbers need to be limited as well.
- Venue Managers will be COVID Marshalls to ensure protocols are adhered to at all venues
- Social distancing will be maintained at all entry and exit points

Activity

The following activities are not permitted during matches:

- Formal walk-ons by the teams and referees
- Handshakes before and after the match
- Team photos before and after the match
- Other pre-match formalities (such as gathering at half-way or the centre circle for a moment's silence)
- Team huddles and high fives
- Multiplayer goal celebrations
- Sharing of personal equipment including drink bottles, towels, bibs, GK gloves, shirts or shin pads.



Match Operations at Venue

Communication

- Clear instructions will be given to players and team officials prior to each session regarding the COVID protocols which need to be adhered to
- All participants will be asked if they are well when completing the match card
- NCF will promote the importance of social distancing 1.5m and 4m² per person guideline through marked seating, social media, newsletters, direct communication and signage at venues

Amenities

- Changerooms will not be open at venues unless they are needed to utilise the toilet
- Toilets will be open for use. Please let the Venue Manager know if the amenities are not clean or are missing soap.



Venue Map

LYNEHAM NETBALL CENTRE



Legend

Participant entry and access to courts



Participant exit from courts and venue



Grandstand and Spectator Seating



Team Bench

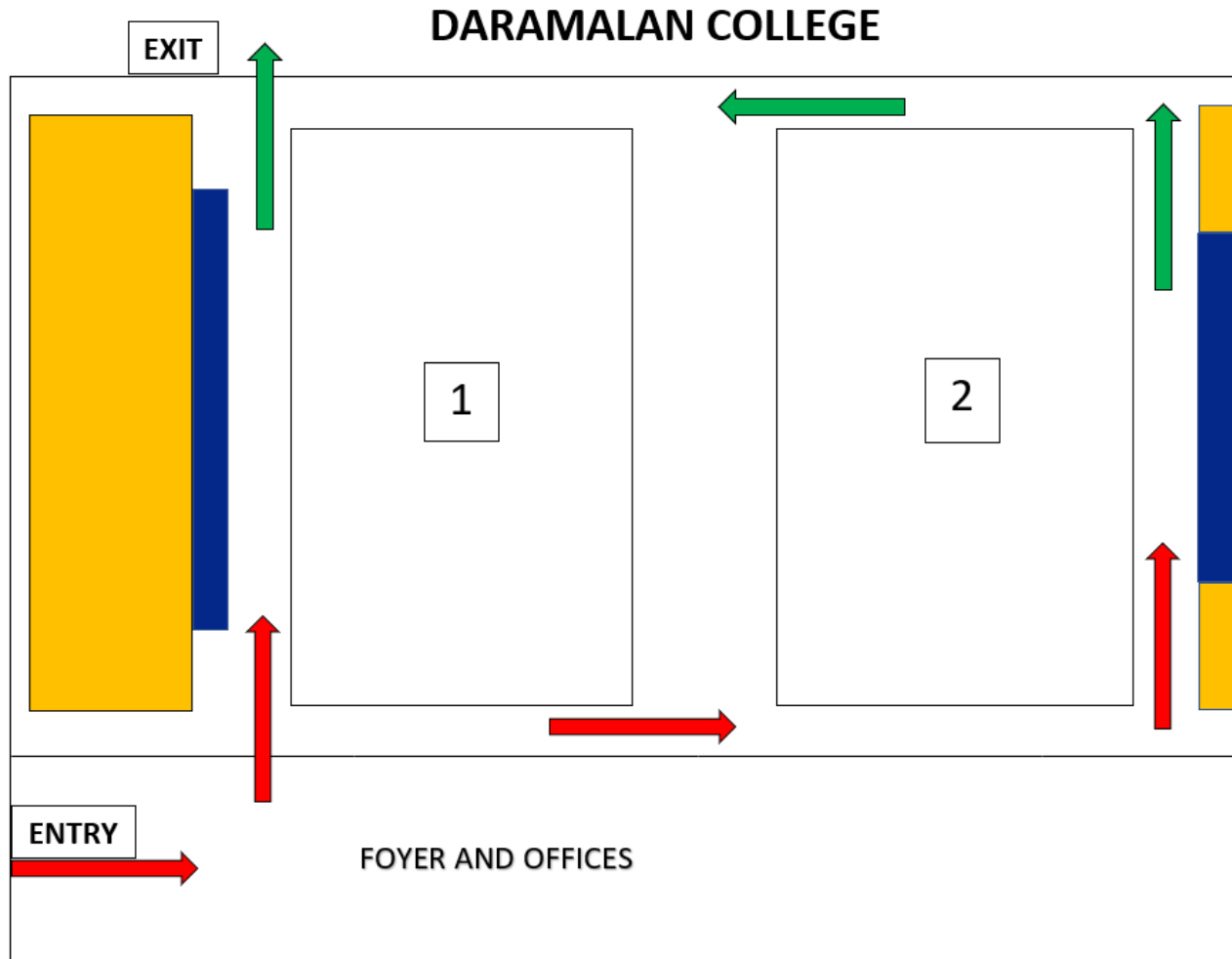


Court Number



CAPITAL
FOOTBALL

Venue Map



Legend

Participant entry and access to courts



Participant exit from courts and venue



Grandstand and Spectator Seating



Team Bench



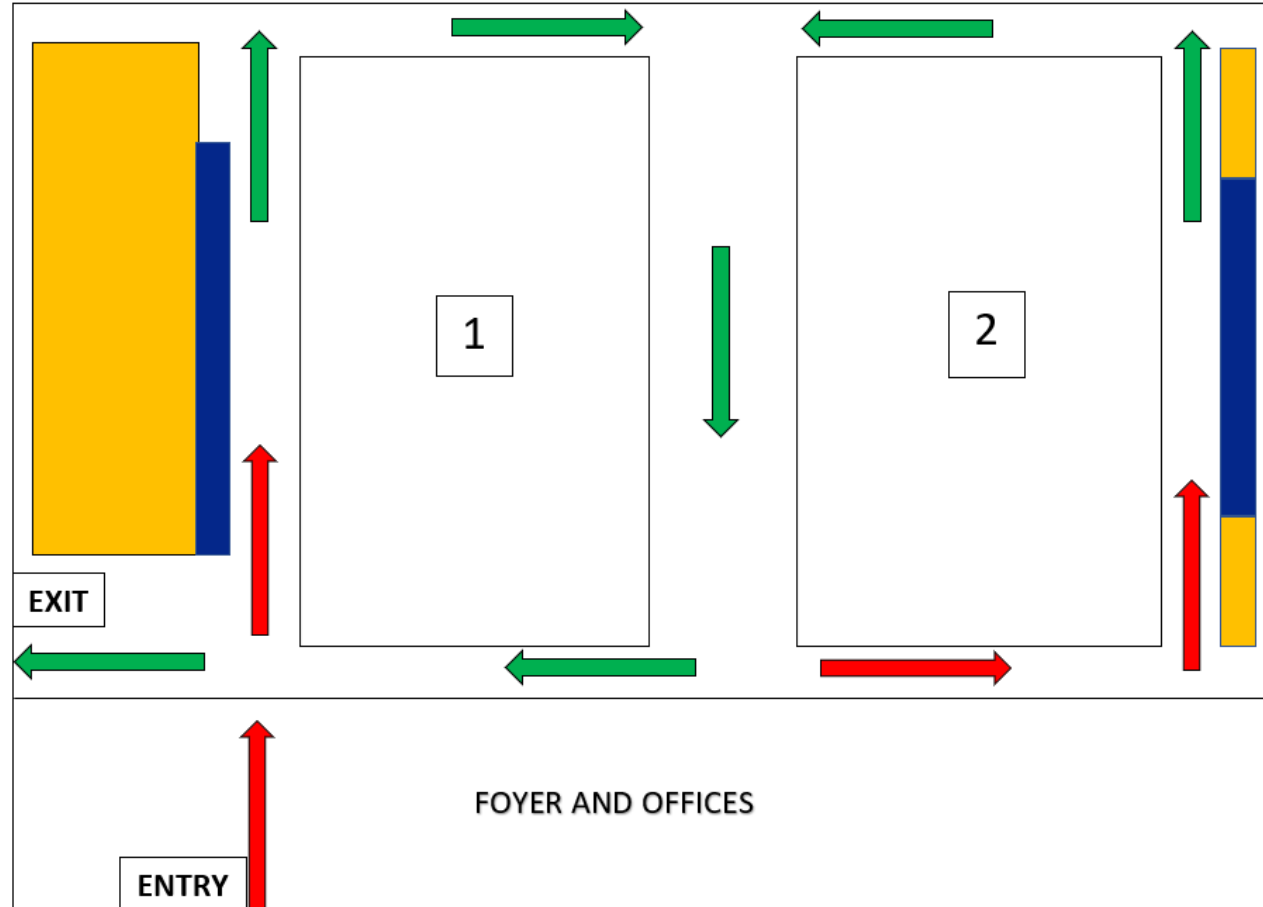
Court Number



CAPITAL
FOOTBALL

Venue Map

RADFORD COLLEGE



Legend

Participant entry and access to courts



Participant exit from courts and venue



Grandstand and Spectator Seating



Team Bench



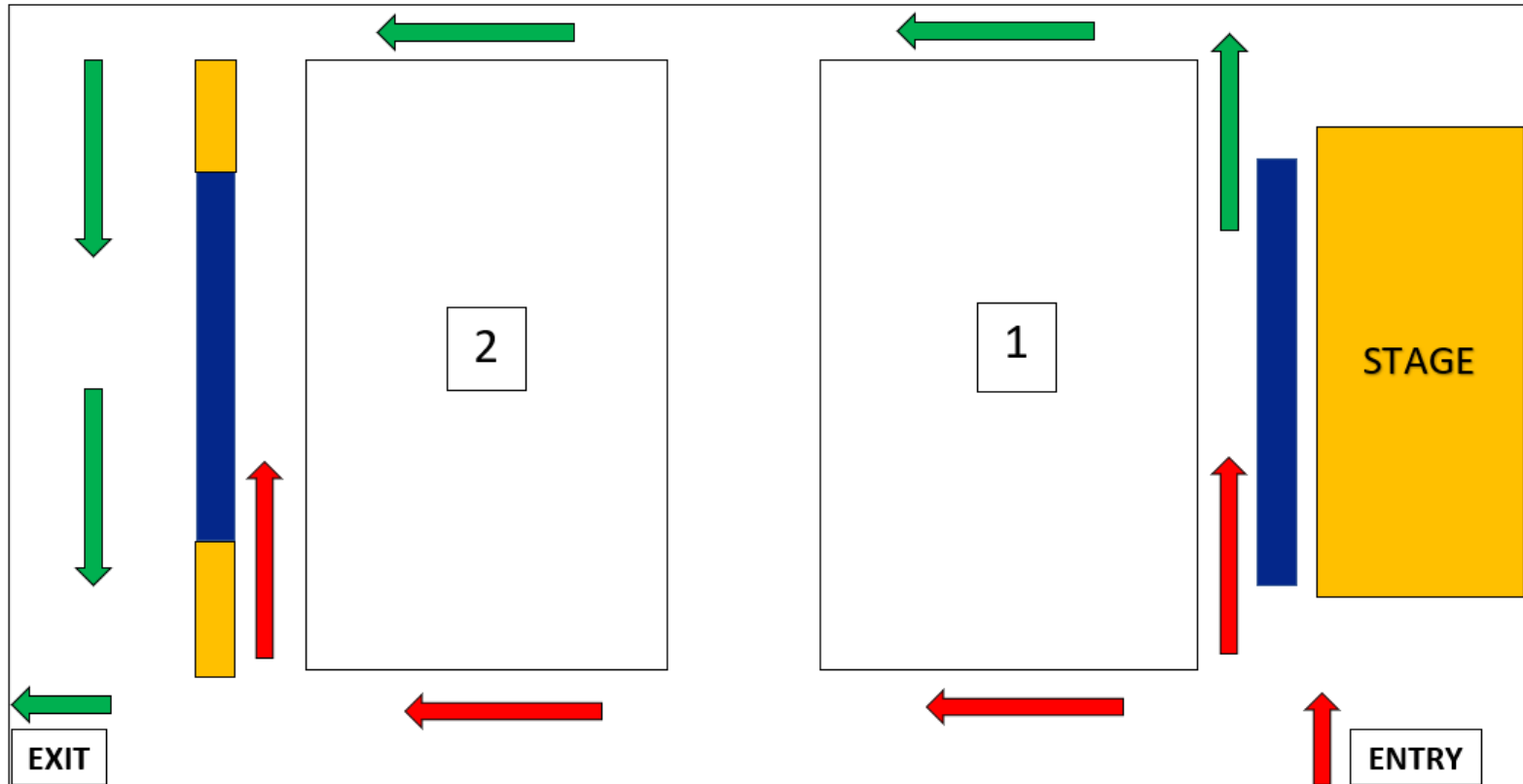
Court Number



CAPITAL
FOOTBALL

Venue Map

GOLD CREEK SCHOOL



Legend

Participant entry and access to courts



Participant exit from courts and venue



Grandstand and Spectator Seating



Team Bench



Court Number



CAPITAL
FOOTBALL